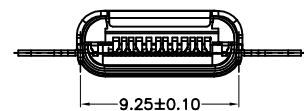
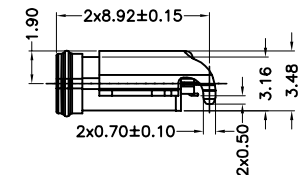
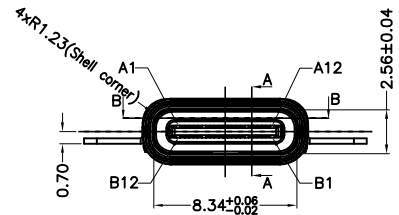
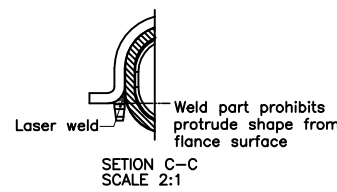
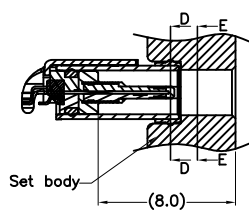
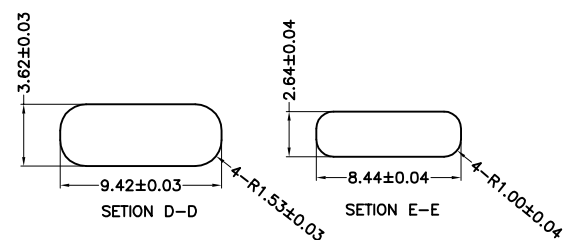
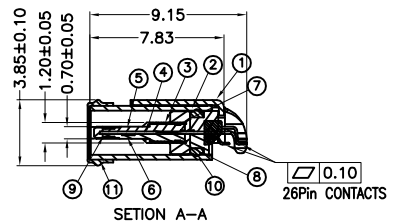
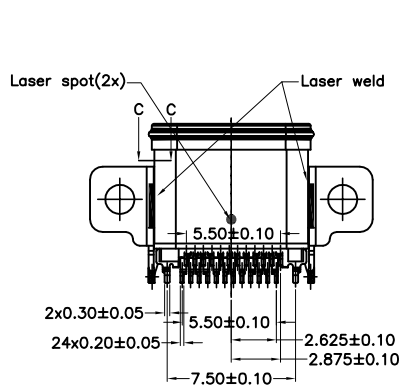


**Remark:**  
 1. MECHANICAL PERFORMANCE,  
 1-1. INSERTION FORCE: 5~20N.  
 1-2. EXTRACTION FORCE: 8~20N INITIAL, 6~20N AFTER TEST;  
 1-3. DURABILITY: 10000 CYCLES.  
 2. ELECTRICAL PERFORMANCE:  
 2-1. CURRENT RATING: 5A MIN FOR VBUS, 0.25A MIN FOR OTHERS  
 VOLTAGE RATING: 20V MAX.  
 2-2. LLOR:  
 VBUS & GND PINS AND OTHER PINS: 40mΩ/PIN MAX.  
 2-3. INSULATION RESISTANCE: 100MΩ MIN  
 2-4. DIELECTRIC WITHSTAND VOLTAGE, AC 100V FOR 1 MINUTE.  
 3. The waterproof grade is IPX8.  
 4. PIN DEFINITION: (Some GND pins(A1,A12,B1,B2) and Mid Plate may connect together)



**PART NUMBER CODE:** (产品料号)  
 CF247-24SL X XX R-C3  
 (1) (2)  
**(1) HOUSING COLOR:**  
 B: BLACK  
**(2) CONTACTS PLATED:**  
 14: 接触镀金15u" 焊接镀金1u"



**PIN DEFINITION:**

A1	A2	A3	A4	A5	A6	A7	A8	A9	A10	A11	A12
GND	TX1+	TX1-	VBUS	CC1	D+	D-	SBU1	VBUS	RX2-	RX2+	GND
GND	RX1+	RX1-	VBUS	SBU2	D-	D+	CC2	VBUS	TX2-	TX2+	GND
B12	B11	B10	B9	B8	B7	B6	B5	B4	B3	B2	B1

<b>PART NO.:</b> SEE THE PART NUMBER CODE		GOLDCONN TECHNOLOGIES COMPANY LIMITED		DRAWN BY SAM		DATE 2020.10.15	
QUALITY SYMBOL 0		GENERAL TOLERANCES (UNLESS SPECIFIED)		CHECKED BY JAY		DATE 2020.10.15	
x.xxxx		± ---		APPROVED BY JACKY		DATE 2020.10.15	
x.xxx		± 0.10		SHEET NO. 1 OF 1			
x.xx		± 0.25		DWG. NO. CF247-24-C3			
x.x		± 0.30		DIMENSION STYLE MM ONLY		DESIGN UNITS METRIC	
ANGULAR		± ---°		SCALE 1:1		THIRD ANGLE PROJECTION	

Item	Title	Material	Dispose
1	Frame	SUS304, T=0.30	Ni:40u" Min.
2	Shell	SUS316, T=0.30	Ni:40u" Min.
3	GND Plate	SUS301, T=0.10	None
4	Mid Plate	SUS301, T=0.15	Ni 40u"Min.+Solder area: Au 1u"Min.
5	Top Contact	C18150, T=0.12	Making Area: Ni 80u"+Au 15u" Min.
6	Bottom Contact	C18150, T=0.12	Solder Tails: Ni 80u"+Au 1u" Min.
7	Housing A	High Temperature Plastic	LCP UL 94V-0/Black
8	Housing B	High Temperature Plastic	LCP UL 94V-0/Black
9	Housing C	High Temperature Plastic	LCP UL 94V-0/Black
10	Rubber(O-ring)	Si	White or Gray
11	Rubber	Si	Black