

RoHS Compliant

REV	ECN No.	DATE	REMARK
A	NEW	2021.08.24	NEW RELEASE

NOTE:

- Electrical Characteristics:
    - 1-1: Current Rating: 5A For Pin(A4,A9,B4,B9)  
1.25 A For Pin(B5)  
0.25A For Others Pin
    - 1-2: VOLTAGE RATING:20V AC/DC,
    - 1-3: Insulation Resistance: 100MΩ Min.
    - 1-4: Contact Resistance:  
VBUS & GND PINS AND OTHER PINS: 40mΩ/PIN MAX.  
SHIELD: 50mΩ/MAX.  
SHIELD: LCCR MAX. CHANGE OF ALL PINS: 10mΩ
    - 1-5: Dielectric Withstanding Voltage: 100V/AC 1Minute
  - Mechanical Characteristics:
    - Insertion Force: 5~20N
    - Extraction Force: Initial: 8~20N  
After durability: 6~20N
    - Durability :10000 Cycles
  - Operating Temperature: -30°C TO +85°C
  - 环境性能:
    - 盐水喷雾72H Min
    - 产品需过R炉, 温度260°C, 10分钟;
- 8." "为重点管制尺寸," ■"为CPK管制尺寸," ⊗"为FAI管制尺寸.

9.PART NUMBER CODE:(产品料号)

CF289-16 X X XX X - 68  
(1) (2)(3)(4)

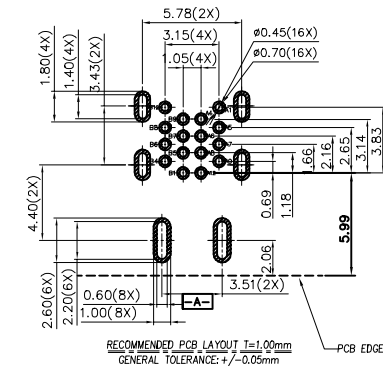
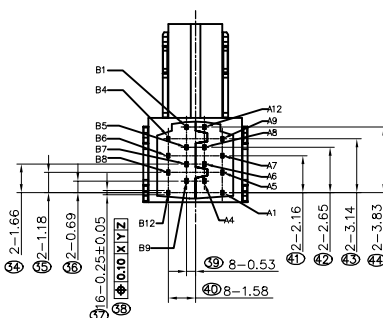
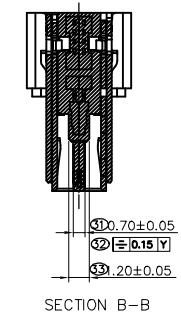
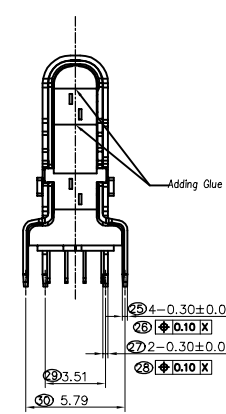
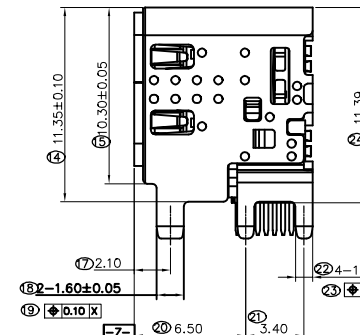
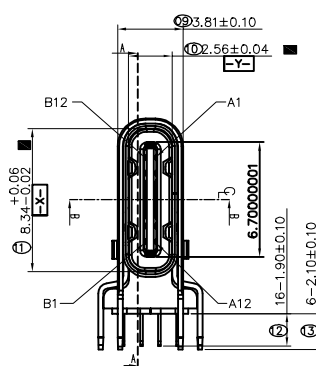
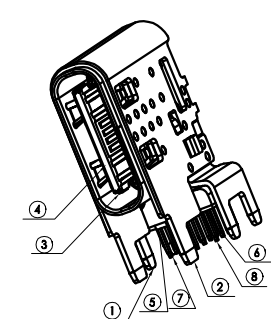
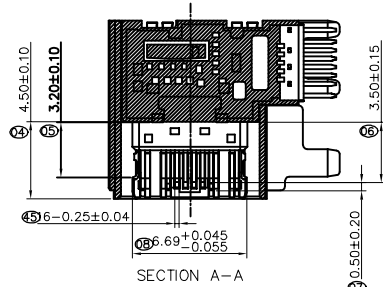
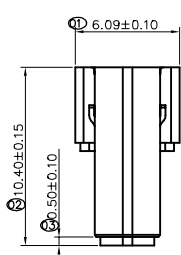
(1) HOUSING MATERIAL:  
N:PA46

(2) HOUSING COLOR:  
B:BLACK

(3) CONTACTS PLATED:  
25:镍底:80-200u", 接触区: 镀镍12u", 镀金2u"Min, 焊接区: 镀金2u"Min,

(4) PACKING OPTIONS  
T:TRAY  
R:TAPE & REEL

① 上排端子	12	GUB149F-1A1-VA2A	C7025-TM03,T=0.15	镍底:80-200u", 接触区: 镀镍12u", 镀金2u"Min, 焊接区: 镀金2u"Min.
⑦ 下排端子	12	GUB150F-1A1-VA2A		
⑥ 上排Moding	1	HUT135L-1A1-XM2A-H		
⑤ 下排Moding	1	HUT136L-1A1-XM2A-H	PA46 HFX33S UL94 V-0	黑色/白色
④ 二次Moding	1	HUT137L-1A1-XM2A-H		
③ 中夹片	1	GUB151U-1A1-VN72	SUS301R-H,T=0.20	整体镀镍40-200u", 盐雾72H
② 内壳	1	GUB152U-1A1-VN72	SUS304-1/2H,T=0.30	整体镀镍40-200u", 盐雾72H
① 外壳	1	GUB153U-1A1-VN72	SUS304-1/2H,T=0.30	整体镀镍40-200u", 盐雾72H
NO. 品名	数量	料号	材质	表面处理



PIN ASSIGNMENT											
A1	A2	A3	A4	A5	A6	A7	A8	A9	A10	A11	A12
GND			VBUS	CC1	Dp1	Dn1	SBU1	VBUS			GND
GND			VBUS	SBU2	Dn2	Dp2	CC2	VBUS			GND
B12	B11	B10	B9	B8	B7	B6	B5	B4	B3	B2	B1

PART NO.: SEE THE PART NUMBER CODE		GOLDCONN TECHNOLOGIES COMPANY LIMITED			DRAWN BY SAM	DATE 2021.08.24
QUALITY SYMBOL 0 V=0	GENERAL TOLERANCES (UNLESS SPECIFIED)		TITLE Type C 16Pin 45W 侧立式母座		CHECKED BY JAY	DATE 2021.08.24
	x.xxxx	± ---	DWG.NO. CF289-16-68		APPROVED BY JACKY	DATE 2021.08.24
	x.xxx	± 0.10	SHEET NO. 1 OF 1			
	x.xx	± 0.20	DIMENSION STYLE MM ONLY		SCALE 1:1	
x.x	± 0.30	DESIGN UNITS METRIC		THIRD ANGLE PROJECTION		
ANGULAR	± ---°			frame size: A4		