

REV	ECN No.	DATE	REMARK
A	NEW	2024.10.10	NEW RELEASE
B	---	2024.04.06	更换新图框

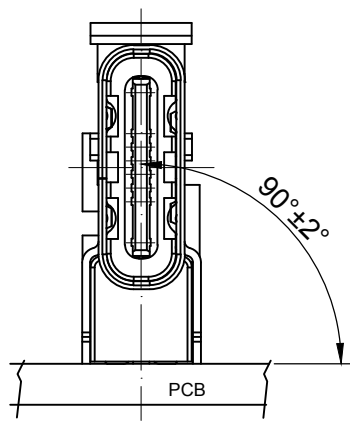
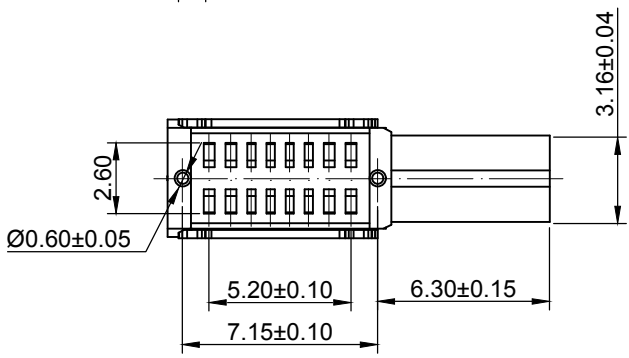
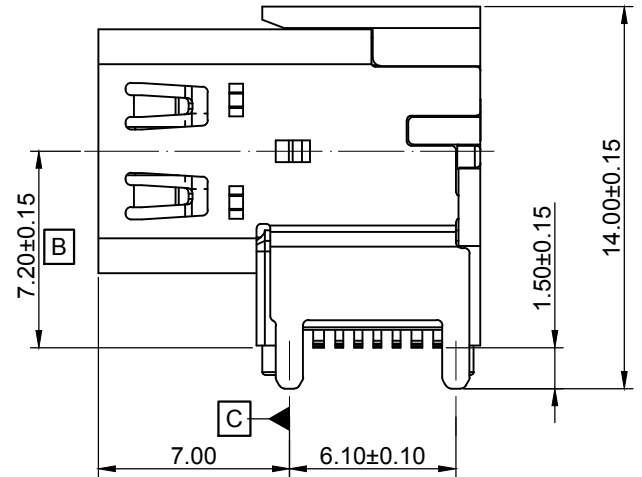
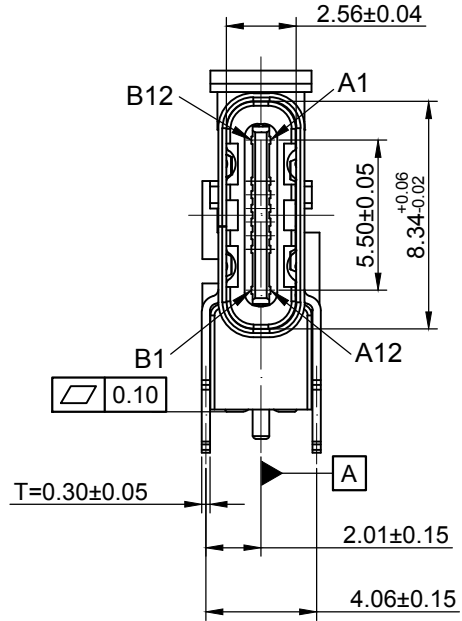
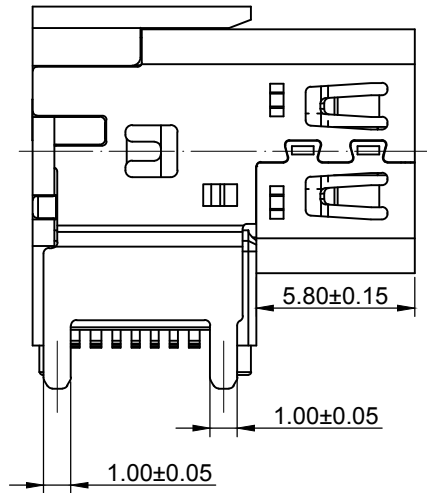
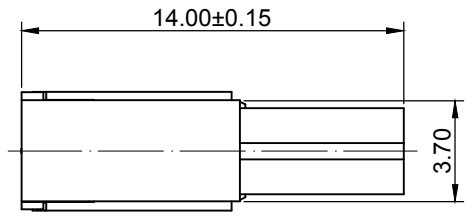
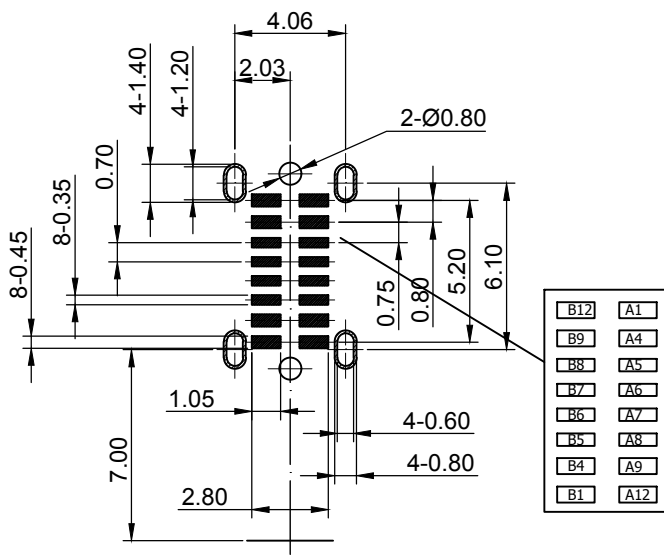


Table:

4	Mid Plate	1PCS	Stainless Steel SUS301 T=0.15mm	---
3	Contact	16PCS	COPPER STEEL C7025 T=0.12mm	Au 1u"Plated On Contact Area GF Plated On Solder Area; Nickel 50u"Min Under Plating Over All.
2	Shell	1PCS	Stainless Steel SUS304 T=0.3mm	NI 30u"MIN Plated
1	Housing	1PCS	LCP UL94 V-0	Black
NO.	Description	QTY	Material	Remarks

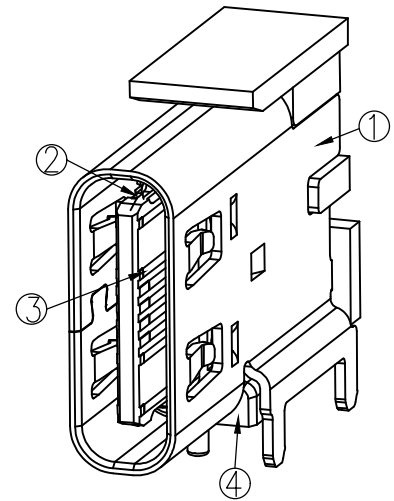
GENERAL TOLERANCES (UNLESS SPECIFIED)		DRAWN BY: HuangXiaoHao		Date: 2024.04.06		GOLDCONN TECHNOLOGIES COMPANY LIMITED	
X.XXX	±0.10	CHECKED BY: liuzongliang		Date: 2024.04.06		TITLE USB TYPE-C FEMALE 16PIN UPRIGHT SMTCH=7.2	
X.XX	±0.20	APPROVED BY: Jacky		Date: 2024.04.06		PART NO. Ordering Information	
X.X	±0.30	THIRD ANGLE PROJECTION		SCALE: 1:1		DWG NO. CF616-006-02	
ANGULAR	±3°	UNT	mm	SHEET NO.	1 OF 3	REV.	B



**RECOMMEND P.C.B LAYOUT(TOW VIEW)**  
**TOLERANCE FOR PCB LAYOUT IS ±0.05**

**USB Type-C Pin Assignments**

Pin Number	Signal Name	Pin Number	Signal Name
A1	GND	B12	GND
A2	----	B11	----
A3	----	B10	----
A4	VBUS	B9	VBUS
A5	CC1	B8	SBU2
A6	Dp1	B7	Dn2
A7	Dn1	B6	Dp2
A8	SBU1	B5	CC2
A9	VBUS	B4	VBUS
A10	----	B3	----
A11	----	B2	----
A12	GND	B1	GND



REV	ECN No.	DATE	REMARK
A	NEW	2024.10.10	NEW RELEASE
B	---	2024.04.06	更换新图框

**Specifications:**

- Electrical Performance,
  - Current Rating:5 Amps. For Total VBUS/GND Pins;  
0.5Amps For CC Pin,  
0.25 Amps. For All Other Contact.
  - Voltage Rating:20V DC/AC (Rms. Max)
  - Contact Resistance: 40mΩ Max Initial.  
50mΩ Max After Test
  - Dielectric Withstanding Voltage: 100V AV
  - Insulation Resistance:100MΩ Min
- Mechanical Performance,
  - Insertion Force: 5~20N.
  - Extraction Force: 8~20N.
  - Durability: 10000 Cycles.
- Environmental Performance:
 

Operating Temperature: -55°C~+85°C.
- IR Reflow:
 

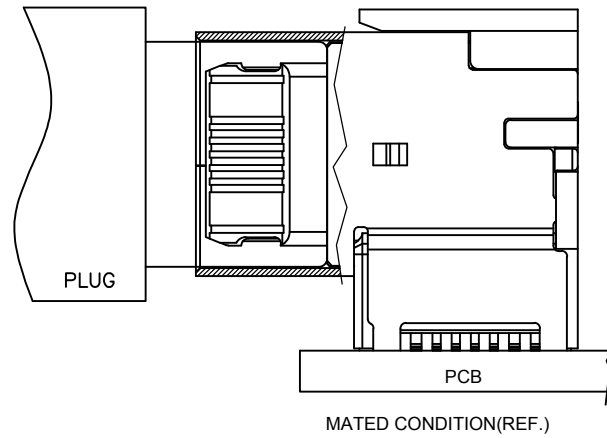
The Peak Temperature On The Board Shall Be Maintained For 10 Seconds At 260°C.
- Salt Spray:48H

TID NO.	IEC62680-1-3
12804	24T04N002784-002-COM

**Ordering Information:**

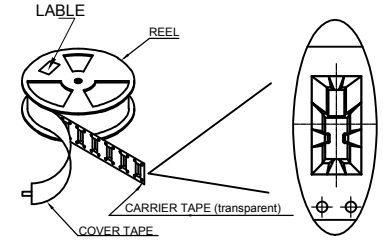
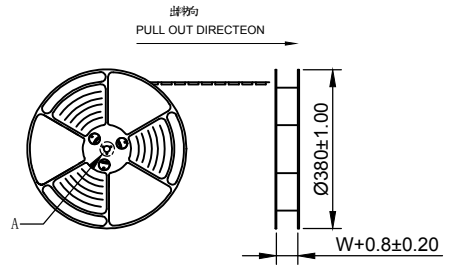
CF  $\frac{6}{1}$   $\frac{16}{2}$  - 006 S L  $\frac{B}{3}$   $\frac{11}{4}$   $\frac{R}{5}$  - 02

- Product Type:
  - Upright
- Pin No.:
  - 16:16Pin
- Housing Color:
  - B:Black
- Contacts Plated:
  - 11:Contact Area: Au 1u",Solder Tails:GF
- Packing Options:
  - R:Tape & Reel

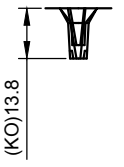
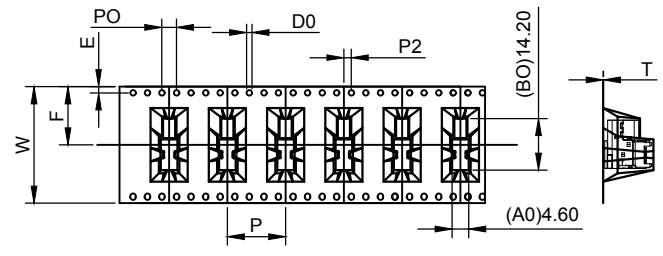


GENERAL TOLERANCES (UNLESS SPECIFIED)		DRAWN BY: HuangXiaoHao Date: 2024.04.06		GOLDCONN TECHNOLOGIES COMPANY LIMITED	
X.XXX	±0.10	CHECKED BY: liuzongliang Date: 2024.04.06	TITLE USB TYPE-C FEMALE 16PIN UPRIGHT SMTCH=7.2		
X.XX	±0.20	APPROVED BY: Jacky Date: 2024.04.06	PART NO. Ordering Information		DWG NO. CF616-006-02
X.X	±0.30	THIRD ANGLE PROJECTION	UNT	SCALE	DRAWING
ANGULAR	±3°	mm	1:1	A4	SHEET NO. 2 OF 3
			REV.		B

REV	ECN No.	DATE	REMARK
A	NEW	2024.10.10	NEW RELEASE
B	---	2024.04.06	更换新图框



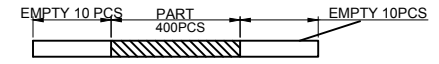
At Small Positioning Hole of The Carrier Tape Side.  
 標籤黏貼處 (朝捲裝包材的小定位孔一側)  
 Location of label sticking (label)



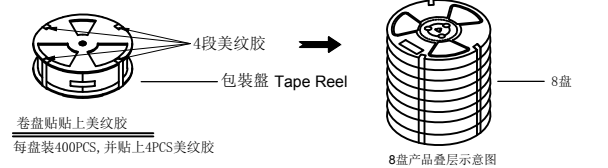
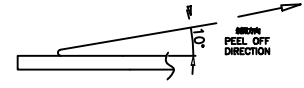
W	32±0.3
F	14.2±0.1
S0	±0.1
T	0.50±0.1
E	1.75±0.1
P	16.0±0.1
P0	4±0.1
P2	2±0.15
A0	4.60±0.1
B0	14.2±0.1
KO	13.8±0.1
D0	1.50 <sup>+0.1</sup> <sub>-0.1</sub>

NOTES

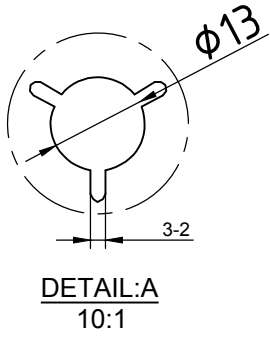
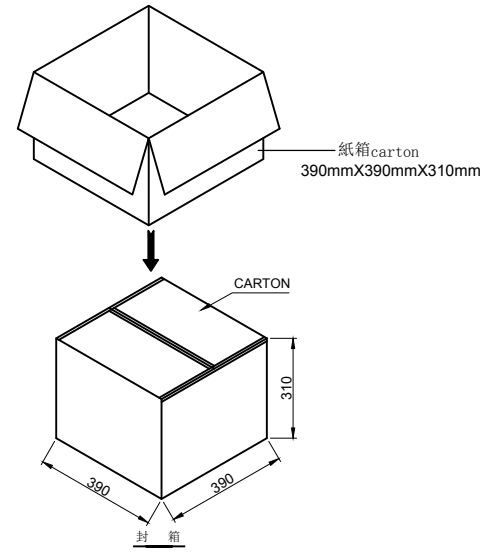
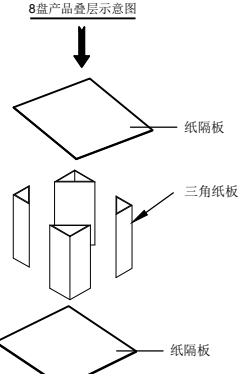
1.帶子引導長度  
 LEAD TAPE LENGTH  
 出料方向  
 PULL OUT DIRECTEON



2.上帶 剝力力為: 0.1~1.3N(10.2gf~130gf)  
 PEELING OFF FORCE OF TOP TAPE:0.1~1.3N(10.2gf~130gf)  
 出貨運輸過程中一定注意:  
 THIS REQUIREMENT SHOULD BE APPLIED AT SHIPMENT:  
 卷帶在運輸過程中不能散開  
 PEELING OFF SHOULD NOT BE ALLOWED DURING TRANSPORTATION



卷盤貼上美紋膠  
 每盤裝400PCS, 并貼上4PCS美紋膠



卷帶	規格: $\phi 380\text{mm}$	包裝數量: 400PCS
紙箱	規格: 390mmX390mmX310mm	包裝數量: 8盤 / 3200PCS

NO.	包材名稱	用量	備註
①	紙箱	1	390*390*310mm,K=K
②	載帶	8	W=24mm,透明PET
③	自粘上帶	8	自粘上帶
④	塑胶卷軸	8	$\phi 380\text{mm}$ ,W=24.5mm
⑤	保护带	8	透明色
⑥	隔板	4	
⑦	三角板(护角)	2	
⑧	外箱标签	1	
⑨	美纹胶	32	
⑩	产品	3200	

描述:

- 产品依以上图纸包装方式对成品进行包装, 载带前空10PCS, 从第11格开始放置产品, 放满400PCS后再将载带尾部空置10PCS不放产品, 再将自粘上带与载带粘好, 注意不可封孔。然后用80-150mm美纹胶固定。
- 产品包装好后再用保护带将载带固定在卷盘上, 再在四周贴上4PCS美纹胶。
- 将1PCS隔板放入内箱底部, 再将8卷产品放入外箱中, 放上4PCS护角。最后在最上层盖上1PCS隔板, 共计3200PCS/箱;
- 纸箱封盖后, 再用封箱胶纸将纸箱口於“工”字型封好, 并在外箱的右上角贴上外箱标签环保标签;
- 未满之零数箱, 需以缓冲材料填满, 并粘贴尾数标签。

GENERAL TOLERANCES (UNLESS SPECIFIED)		DRAWN BY: HuangXiaoHao		Date: 2024.04.06		GOLDCONN TECHNOLOGIES COMPANY LIMITED			
X.XXX	±0.10	CHECKED BY: liuzongliang		Date: 2024.04.06		TITLE USB TYPE-C FEMALE 16PIN UPRIGHT SMTCH=7.2			
X.XX	±0.20	APPROVED BY: Jacky		Date: 2024.04.06		PART NO. Ordering Information		DWG NO. CF616-006-02	
X.X	±0.30	THIRD ANGLE PROJECTION		UNT		SCALE		DRAWING SHEET NO.	
ANGULAR	±3°	mm		1:1		A4		3 OF 3	
								REV. B	